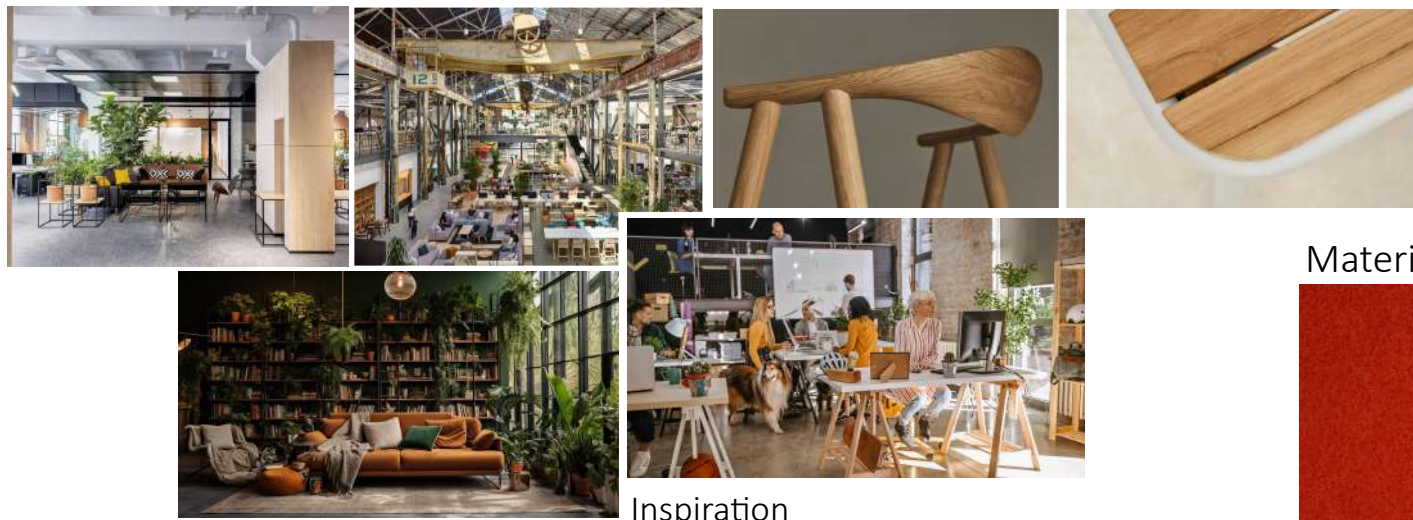


The Project: A business in the heart of Edmonton is growing rapidly, with more people working from home, the cubicle workspace was no longer working for the team. The client wanted more modular options, with zone segmentation for the workers. The client expressed a need for biophilic design as it helps the workers feel more relaxed and comfortable during their workdays. We incorporated moss wall



Inspiration

Wall coverings



Materials



Paint options



Feature Lighting



Final Renderings

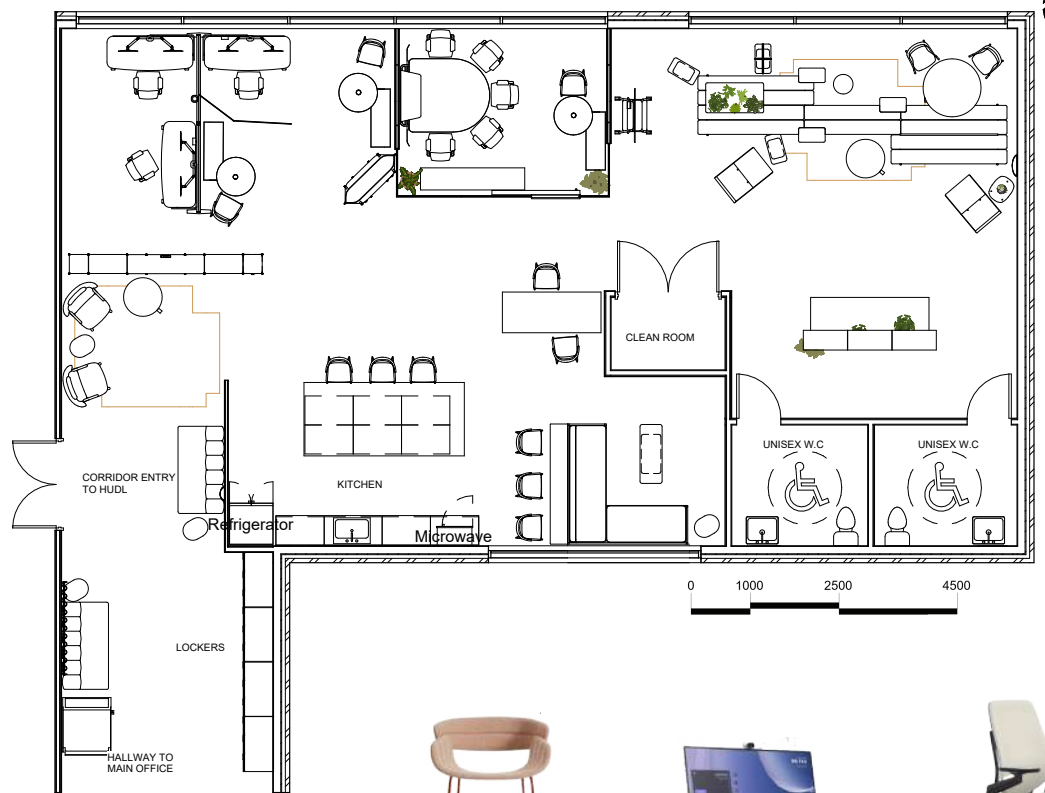


Collaboration space



Entryway

HUDL SPACE FLOOR PLAN



Half Past



Cosh Armchair



Grab Pouf



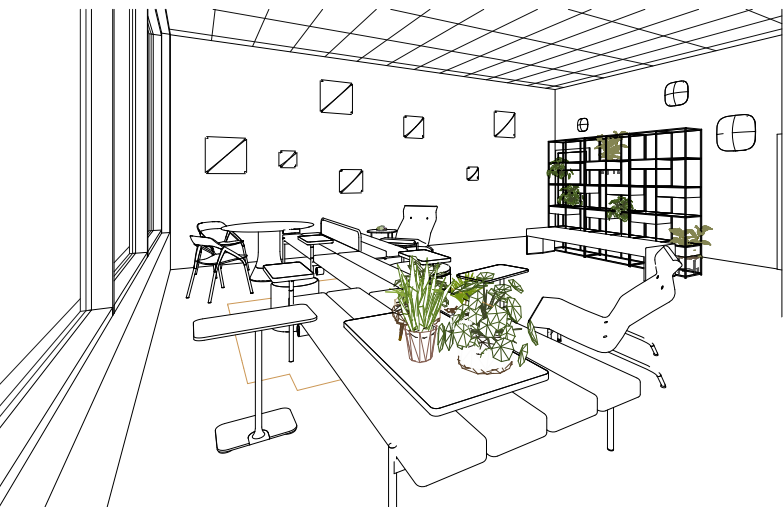
Island collection



Lucio Chair



Flex Active Frames



Racer Stool



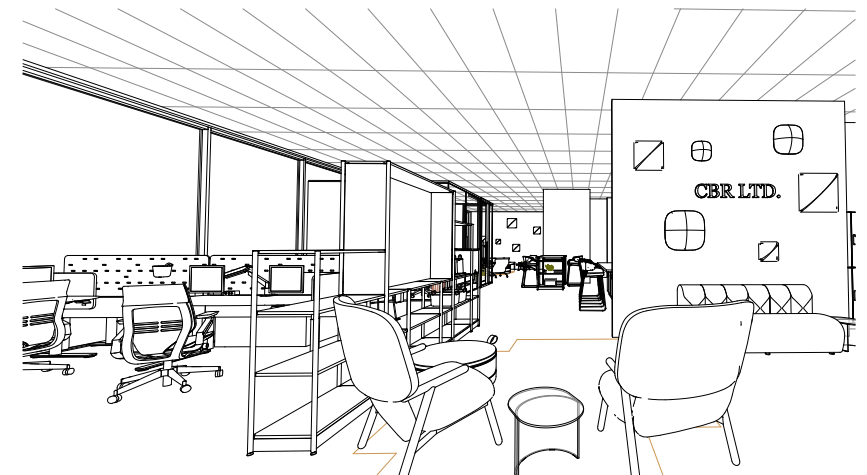
Roam Collection



Gesture Office Chair



Flex Acoustic Boundary



Boarder -02



Work Belle



On the QT Pod





# NEWPORT COMMUNITY CENTER



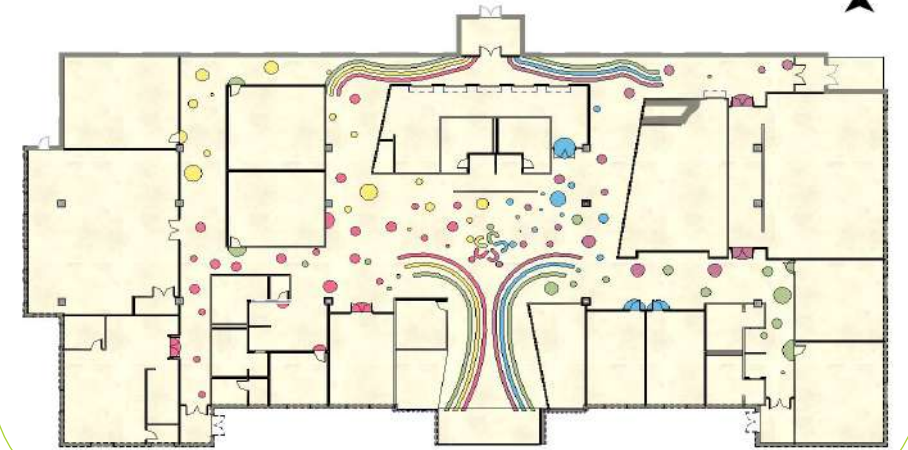
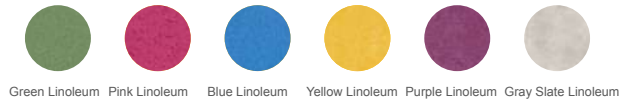
## Newport's Mission Statement

“Promote and provide quality activities and services that will contribute to the physical, emotional, and social wellbeing of the community.”

In this design prompt, our client wanted to redesign their Community center with great importance in highlighting their bright and colorful logo. While working within a group, I was in charge of the final renderings using Revit and Enscape applications to ensure the client was provided a great understanding of the design and our intent.

## FLOORING DESIGN

### FLOORING MATERIAL AND COLOR SWATCHES



Flooring Design

## CEILING DESIGN

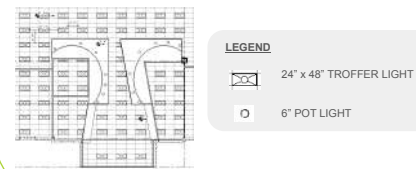
### CEILING LEGEND AND PAINT SWATCHES



Ceiling Perspective Walking into the Building



Reflected Ceiling Plan



## COLUMN DESIGN

### Column Material Swatches



Column Perspective



## FURNITURE PLAN AND LEGEND



Furniture Perspective

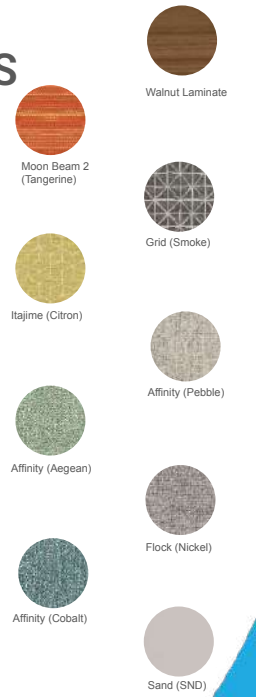


Furniture Plan

## FURNITURE TEXTILES

### Furniture Chart / Legend

Community Center Furniture			
Symbol	Image	Product Name	Texture
[Symbol]	[Image]	3262 - Wind 2 Seat Sofa, Metal Legs	[Texture]
[Symbol]	[Image]	8006 - Draft Ottoman	[Texture]
[Symbol]	[Image]	8038 - Draft High Back Lounge Chrome Swivel Base	[Texture]
[Symbol]	[Image]	3388 - Wind Square Coffee Tables with Chrome Legs	[Texture]
[Symbol]	[Image]	3365 - Wind Square End Table with Chrome Legs	[Texture]
[Symbol]	[Image]	River RT - The overachiever - Modular sofa seating	[Texture]
[Symbol]	[Image]	R27842 River "Y" bench	[Texture]
[Symbol]	[Image]	3261 Wind Lounge Chair	[Texture]
[Symbol]	[Image]	Plecom stacking chair	[Texture]
[Symbol]	[Image]	Plecom stacking chair	[Texture]





The Project: Create a restaurant for a client utilizing a pre-existing brick building in the downtown Edmonton area. The client wanted to continue with the rustic industrial personality that the building already had. The client wanted a space where you could go for a casual dining experience, while still having a “wow” factor. The bar being a hearth of the space was crucial, so we opted for a navy blue ceramic tile with a solid surface top layer for ease of cleaning. Renderings made using Sketch-up and Enscape.



Inspiration



Materials



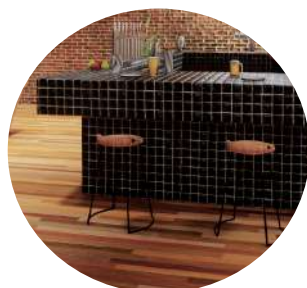
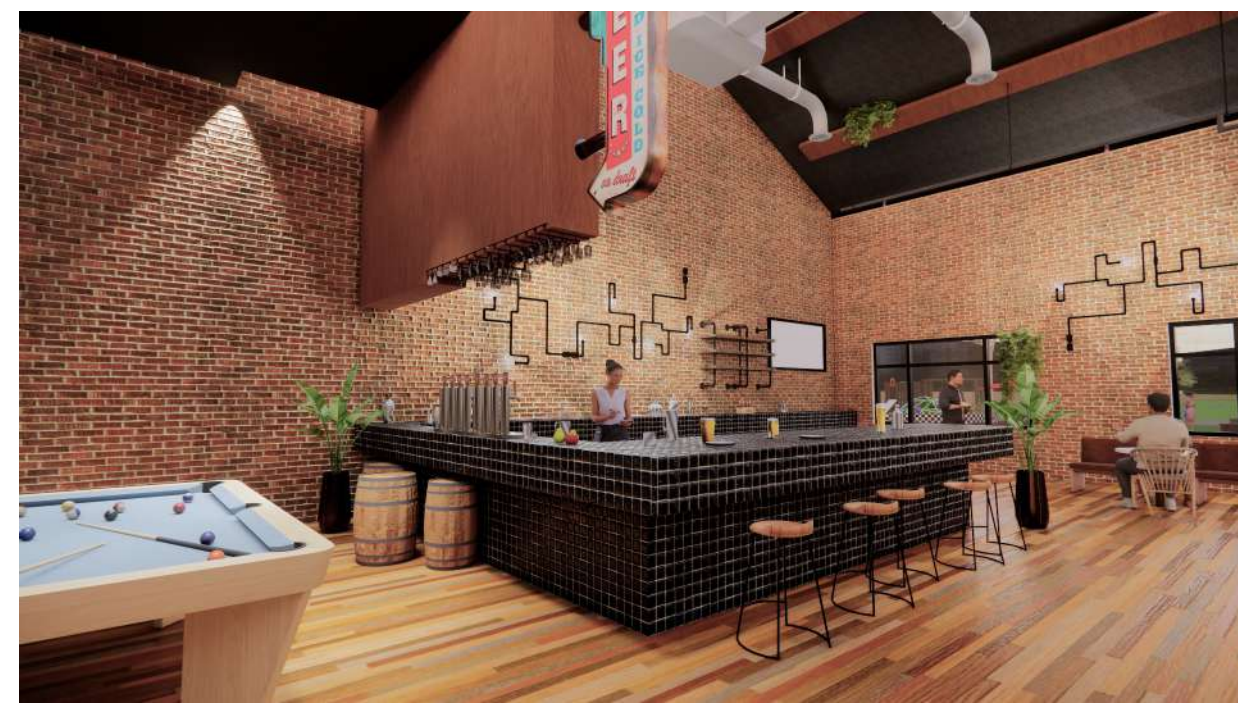
Furniture & Lighting



Shelving & Barware



Floor Plan







EXTERIOR RENDERING



STAIR RENDERING



BAR RENDERING



SCHOOL OF SUSTAINABLE BUILDING  
AND ENVIRONMENTAL MANAGEMENT  
ARCHITECTURAL TECHNOLOGY

No.	Description	Date

**BLUE PARROT  
RESTAURANT**

**RENDERINGS**

Class Number ENDS2330 A04

Date DEC, 2024

Drawn by Indigo Landry

Instructor Bobby Harris

**A10**

Scale





CONSULTANTS

NOTES

REVISIONS

No. DATE DESCRIPTION

PROJECT

LAW OFFICE RENOVATION

DRAWING

MAIN FLOOR EXISTING & DEMO

DESIGNED BY: NAIT

CHECKED BY: LORI PAINE

DRAWN BY: INDIGO LANDRY

DATE: NOV, 2024

COURSE: INDT2301

CLASS: A01

INSTRUCTOR: LORI PAINE

SCALE: VARIES

SET: 1 of 4

PROJECT No:

SHEET No:

2

CAD FILE:

ID1

GENERAL DEMO NOTES

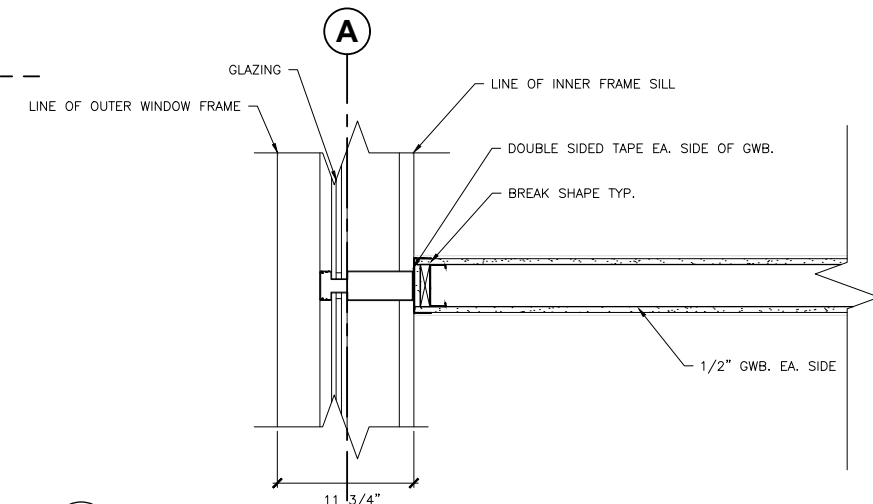
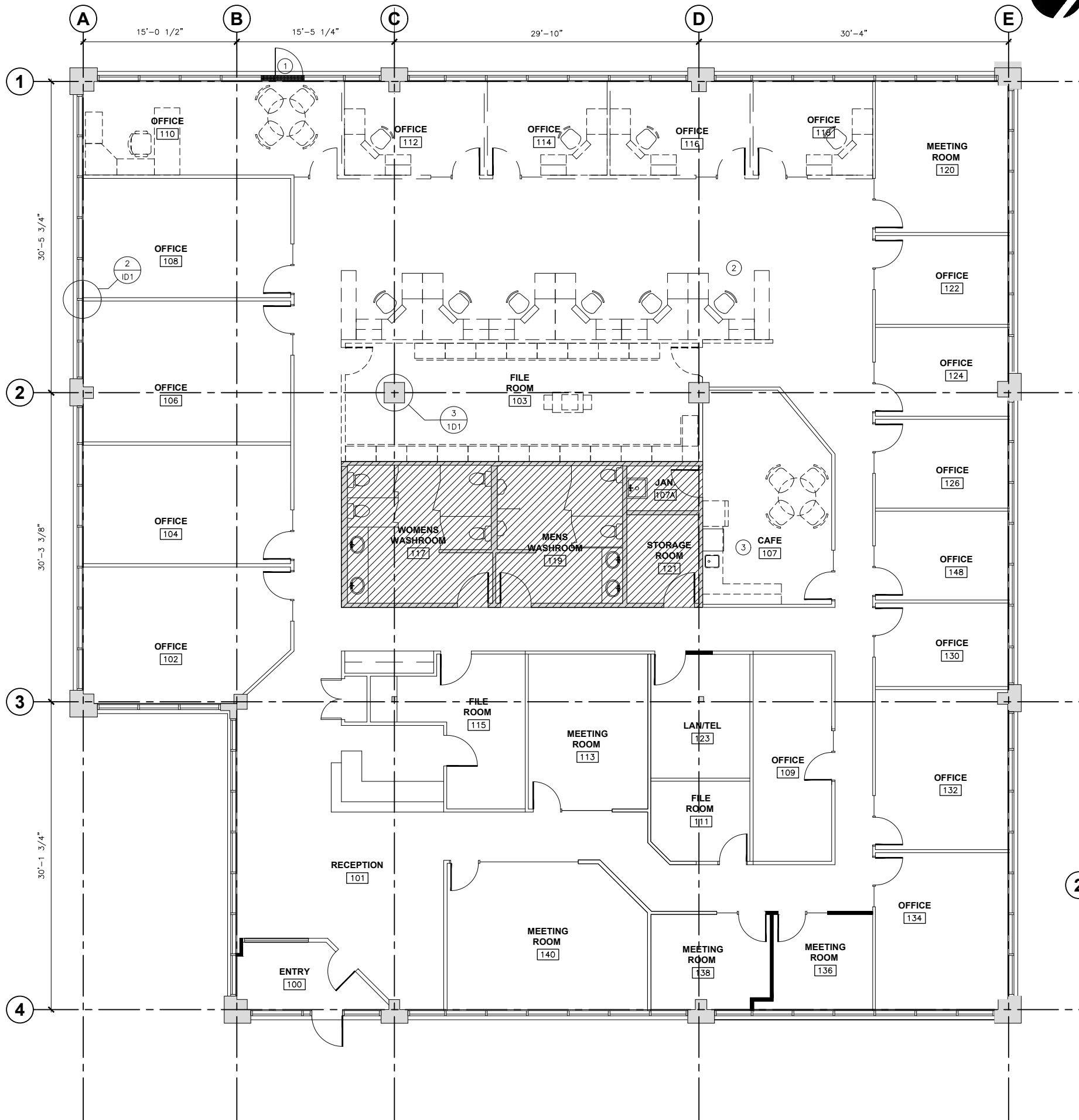
1. READ IN CONJUNCTION W/ THE PROJECT SPECIFICATION, AND ELECTRICAL & MECHANICAL DRAWINGS
2. SECURED PARTITIONS TO T-BAR GRID WITH APPROPRIATE CLIPS. DO NOT PUNCTURE EXPOSED FACE OF T-BAR COMPONENTS.
3. DO NOT PENETRATE FACE OF PERIMETER WALLS OR MULLIONS AT PARTITION INTERSECTIONS, USE ADHESIVE FACED CLOSED CELL FOAM GASKETS AT INTERSECTIONS. WHERE REQUIRED PROVIDE ADDITIONAL FIRE TREATED OR NON-COMBUSTIBLE BLOCKING IN PARTITIONS, OR CEILING FOR SUPPORT OF SHELVING, MILLWORK, GRAB BARS, ACCESSORIES OR OTHER ITEMS THAT ARE PART OF THIS CONTRACT.
5. LOCATE ALL DOOR FRAMES 4" FROM CORNER OF ROOM U.N.O.

DEMO LEGEND

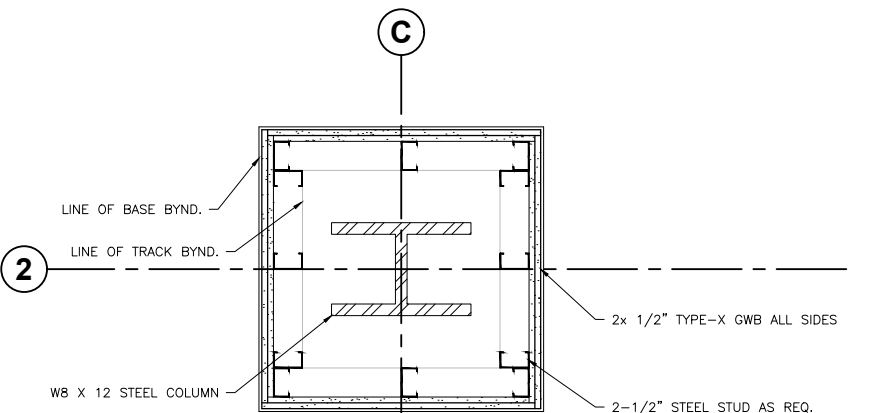
- DENOTES GLAZING TO BE REMOVED
- DENOTES EXISTING WALLS
- DENOTES DEMO WALLS TO BE REMOVED
- DENOTES AREA N.I.C

KEY NOTES

- 1 REMOVE EXISTING EXTERIOR GLAZING PANEL TO ACCOMMODATE NEW DOOR
- 2 FURNITURE TO BE RELOCATED --- REFER TO NEW PLAN
- 3 REMOVE EXISTING KITCHEN AND MILLWORK PATCH AND MAKE GOOD OF ALL SURFACES WHERE REMOVED



2 CONNECTION DETAIL ID1 SCALE = 1'-1/2" = 1' - 0"



3 COLUMN DETAIL ID1 SCALE = 1'-1/2" = 1' - 0"

1 MAIN FLOOR DEMO PLAN ID1 SCALE = 3/16" = 1' - 0"



CONSULTANTS

NOTES

REVISIONS

No. DATE DESCRIPTION

PROJECT

LAW OFFICE RENOVATION

DRAWING

MAIN FLOOR NEW CONSTRUCTION

DESIGNED BY: NAIT

CHECKED BY: LORI PAINE

DRAWN BY: INDIGO LANDRY

DATE: NOV. 2024

COURSE: INDT 2301

CLASS: A04

INSTRUCTOR: LORI PAINE

SCALE: VARIES

SET: 2 of 4

PROJECT No:

SHEET No:

2

CAD FILE:

ID2

GENERAL DEMO NOTES

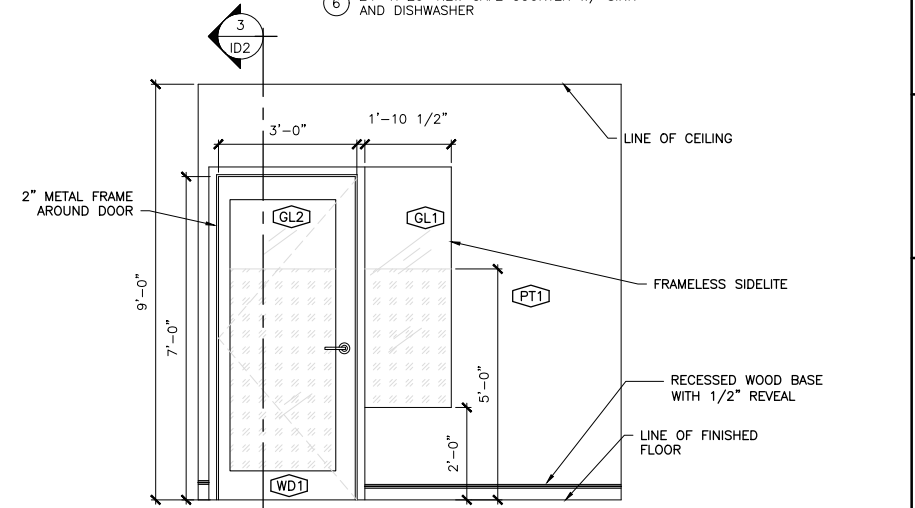
- 1. READ IN CONJUNCTION W/ THE PROJECT SPECIFICATION, AND ELECTRICAL & MECHANICAL DRAWINGS
2. SECURED PARTITIONS TO T-BAR GRID WITH APPROPRIATE CLIPS. DO NOT PUNCTURE EXPOSED FACE OF T-BAR COMPONENTS.
3. DO NOT PENETRATE FACE OF PERIMETER WALLS OR MULLIONS AT PARTITION INTERSECTIONS. USE ADHESIVE FACED CLOSED CELL FOAM GASKETS AT INTERSECTIONS. WHERE REQUIRED PROVIDE ADDITIONAL FIRE TREATED OR NON-COMBUSTIBLE BLOCKING IN PARTITIONS, OR CEILING FOR SUPPORT OF SHELVING, MILLWORK, GRAB BARS, ACCESSORIES OR OTHER ITEMS THAT ARE PART OF THIS CONTRACT.
5. LOCATE ALL DOOR FRAMES 4" FROM CORNER OF ROOM U.N.O.

DEMO LEGEND

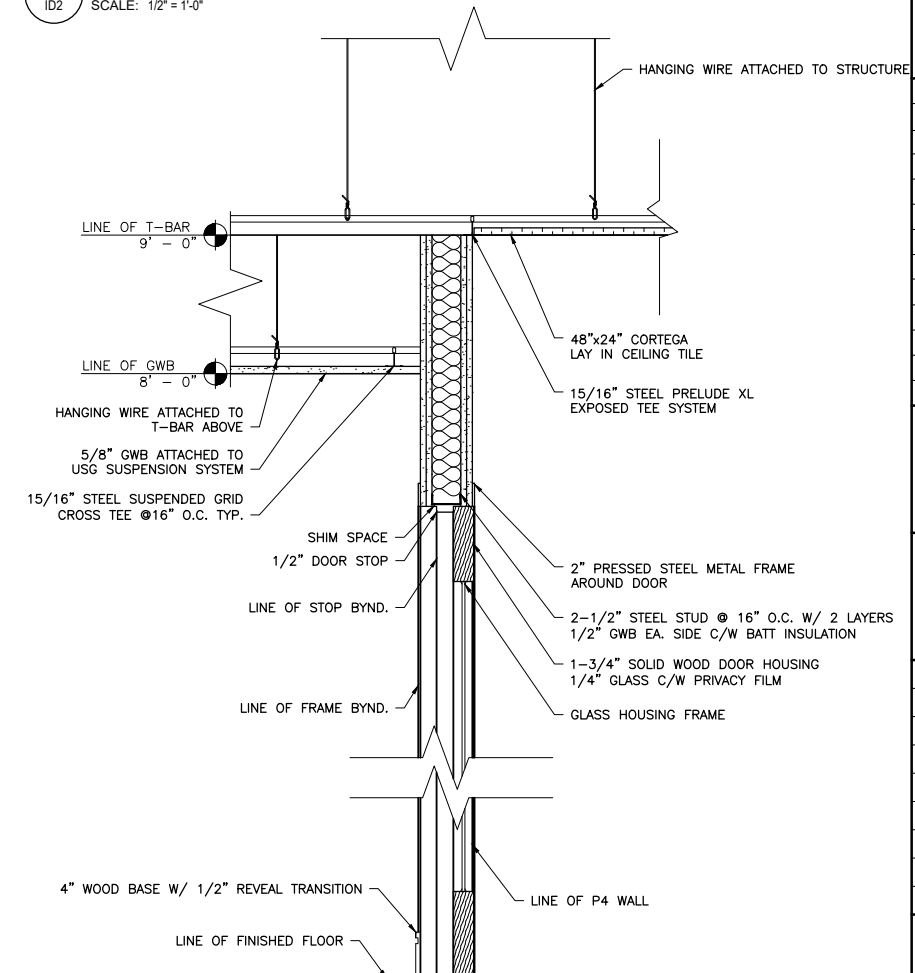
- Denotes new walls
Denotes new millwork
Denotes existing walls
Denotes area N.I.C.

KEY NOTES

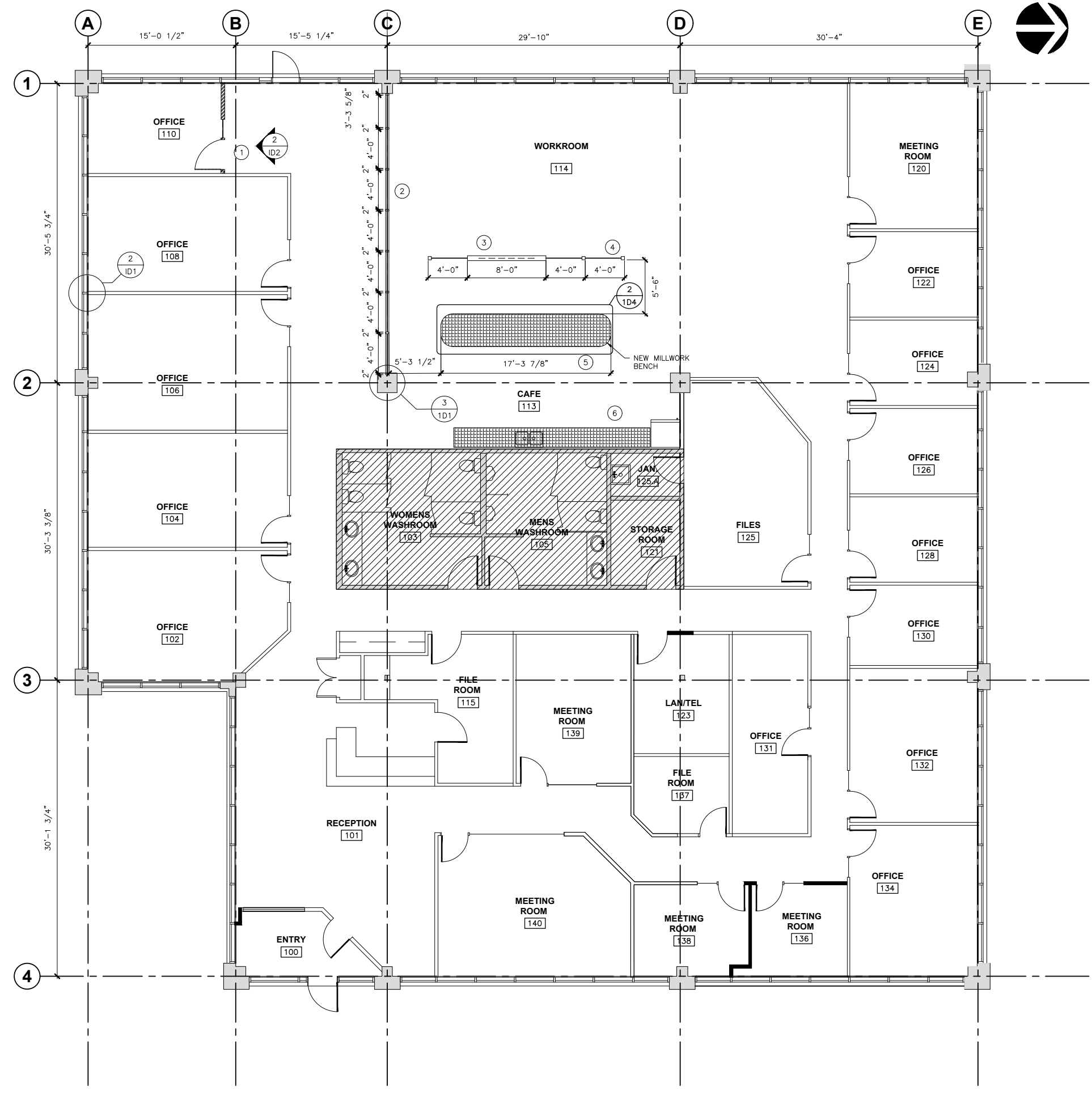
- 1 NEW WALL TO U/S OF CEILING W/ DOOR AND SIDELITE - REFER TO ELEVATION
2 FULL HEIGHT GLASS W/ 2" X 4" MULLIONS TO U/S OF CEILING
3 6" X 5" PART. HT TILE WALL W/ GLASS
4 PARTIAL HEIGHT GLASS WALL W/ 4" X 4" MULLIONS
5 3'-4" X 17'-4" NEW MILLWORK BENCH
6 24" X 20' NEW CAFE COUNTER W/ SINK AND DISHWASHER



2 ELEVATION OF TYP OFFICE SCALE: 1/2" = 1'-0"



3 VERTICAL INTERIOR DOOR SECTION SCALE = 1-1/2" = 1'-0"



1 NEW MAIN FLOOR PLAN SCALE = 3/16" = 1' - 0"



SCHOOL OF APPLIED  
SCIENCE AND TECHNOLOGY  
ARCHITECTURAL TECHNOLOGY

CONSULTANTS

NOTES

REVISIONS

No.	DATE	DESCRIPTION
-----	------	-------------

PROJECT

LAW OFFICE  
PROJECT

DRAWING

REFLECTED CEILING  
PLAN

DESIGNED BY: NAIT

CHECKED BY: LORI PAINE

DRAWN BY: INDIGO LANDRY

DATE: NOV, 2024

COURSE: IND2301

CLASS: A01

INSTRUCTOR: LORI PAINE

SCALE: VARIES

SET: 3 of 4

PROJECT No:

SHEET No:

2


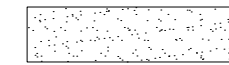
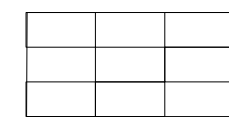
CAD FILE:

**ID3**



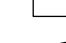




CEILING LEGEND

MATERIALS

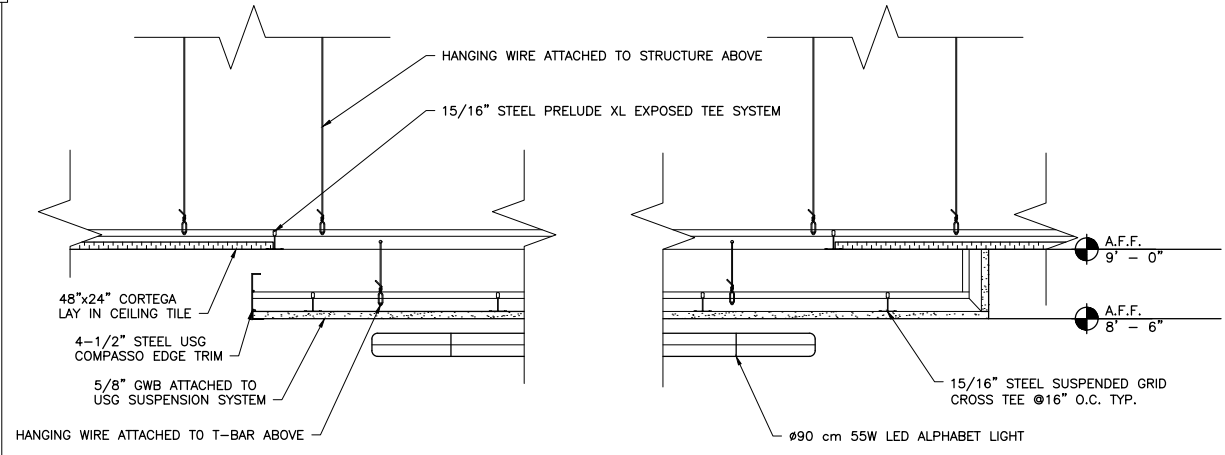
 DENOTES 24" RADIANT HEATING PANEL  
 DENOTES ALL GWB CEILING - HEIGHT VARIES REFER TO RCP  
 DENOTES 24"x48" TBAR GRID CEILING

LIGHTING

 7-1/4" OneUP RECESSED DIRECT-WIRE LED POT LIGHTS  
 24"x24" AVANTE LED RECESSED TROFFER LIGHT FIXTURE  
 24"x48" AVANTE LED RECESSED TROFFER LIGHT FIXTURE  
 Ø155 cm ALPHABET OF LIGHT CIRCULAR CEILING DIFFUSED LIGHT FIXTURE  
 Ø90 cm ALPHABET OF LIGHT CIRCULAR CEILING DIFFUSED LIGHT FIXTURE

GENERAL NOTES: REFLECTED CEILING PLAN:

1. READ IN CONJUNCTION WITH THE PROJECT SPECIFICATIONS
2. REFER TO MECHANICAL AND ELECTRICAL DRAWINGS FOR COMPLETE SPECIFICATIONS, INCLUDING COLOUR AND FINISHES OF DEVICES AND COVER PLATES.
3. THIS DRAWING IS FOR THE LOCATION AND DIMENSIONS OF A PORTION OF FIXTURES, OUTLETS GRILLS, DIFFUSERS AND OTHER EQUIPMENT AND DEVICES. IT IS NOT INTENDED TO INDICATE THE COMPLETE SCOPE OF MECHANICAL AND ELECTRICAL WORK. REPORT ANY DISCREPANCIES BETWEEN THIS DRAWING AND ENGINEERS' DRAWINGS TO THE CONSULTANT IMMEDIATELY.
4. DIMENSIONS ARE TO THE CENTERLINE OF FIXTURES UNLESS OTHERWISE INDICATED.
5. LOCATE SWITCHES 42" A.F.F. TO CENTERLINE OF FIXTURES UNLESS OTHERWISE INDICATED. LOCATE SWITCHES 6" (150MM) TO CENTERLINE FROM DOOR OR GLAZING FRAMES UNLESS OTHERWISE NOTED
6. CENTER RECESSED FIXTURES IN CEILING TILES UNLESS OTHERWISE DIMENSIONED.
7. REVIEW LOCATIONS OF ALL ACCESS PANELS WITH CONSULTANT. ADJUST LOCATIONS AS REQUIRED BASED ON REVIEW.
8. REFER TO PLANS AND PRODUCTS & COLOURS SCHEDULE FOR CEILING TILE TYPES AND LOCATIONS.
9. ADJUST SUSPENDED CEILING GRIDS AND ACOUSTIC TILE TO ACCOMMODATE MECHANICAL AND ELECTRICAL DEVICES AND EQUIPMENT. PROVIDE ADDITIONAL CEILING COMPONENTS AS REQUIRED.
10. SUPPORT ALL T-BAR CEILING MOUNTED DEVICES FROM T-BAR OR STRUCTURE ABOVE, NOT FROM CEILING TILES.
11. PROVIDE ADEQUATE NON-COMBUSTIBLE HANGERS AND BLOCKING ABOVE THE CEILING TO SUPPORT ITEMS THAT ARE PART OF THIS CONTRACT.
12. PROVIDE ADDITIONAL NON-COMBUSTIBLE HANGERS AND BLOCKING INDICATED ON DRAWINGS REQUIRED TO SUPPORT WORK THAT IS SUPPLIED AND INSTALLED BY OTHERS.
13. PAINT ALL GYPSUM BOARD CEILINGS, SOFFITS AND BULKHEADS PT-3 UNLESS OTHERWISE NOTED.
14. PAINT EXPOSED SURFACES OF PAINTABLE ACCESS PANELS, GRILLES AND LINEAR DIFFUSERS TO MATCH THE CEILING COLOUR.

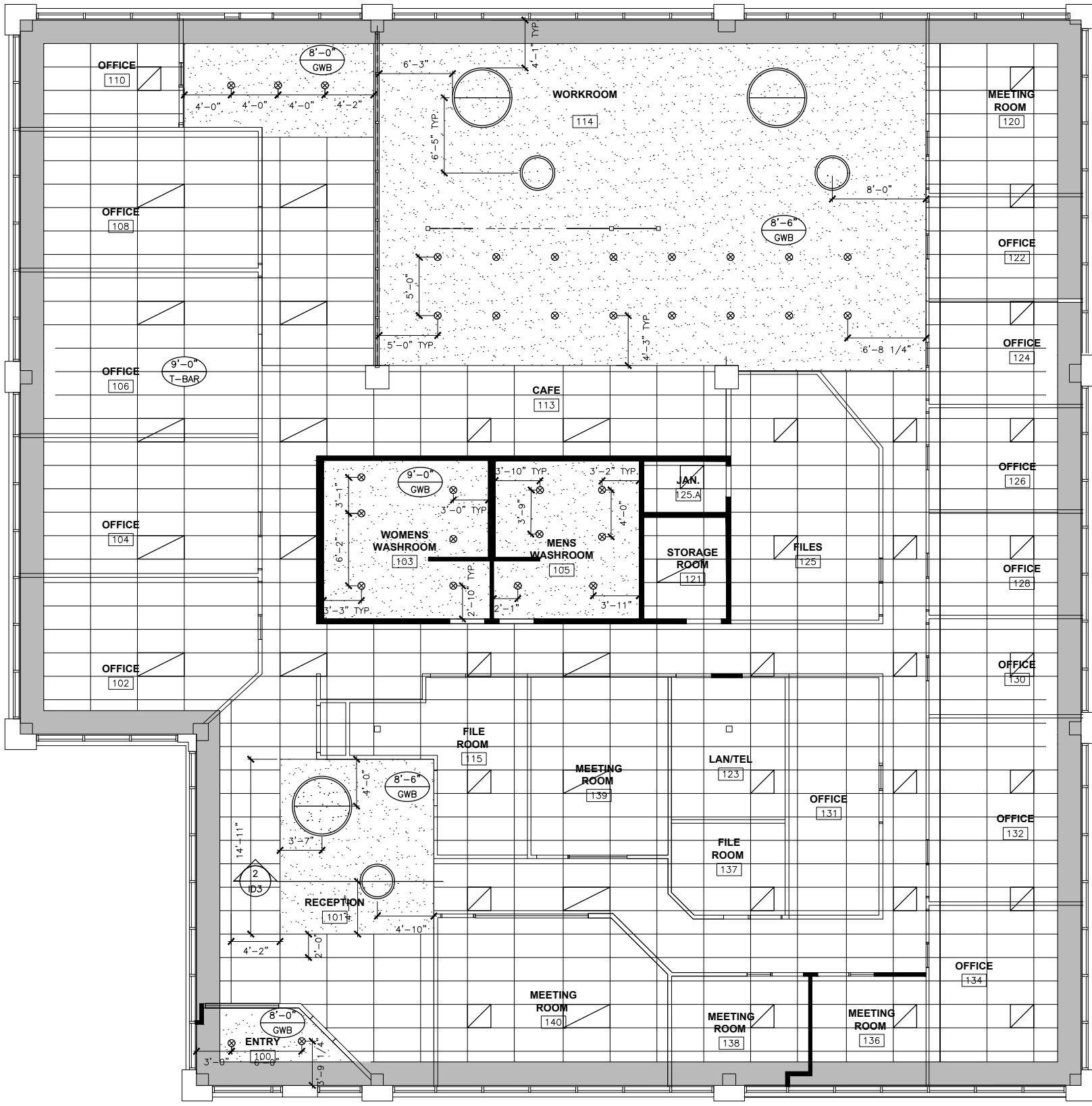


**2 SECTION THRU RECEPTION AREA**

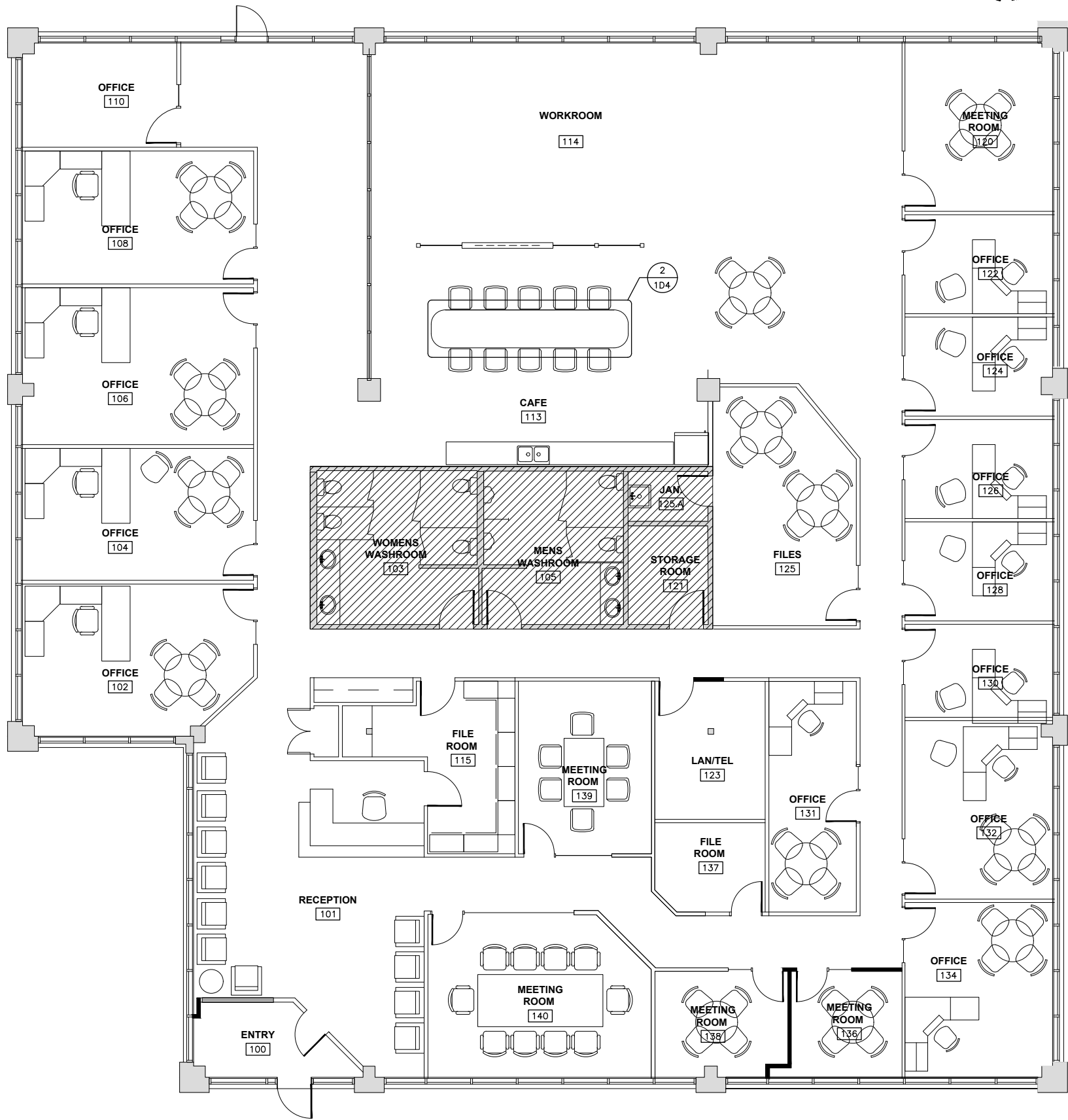
SCALE = 1-1/2" = 1'-0"

**1 REFLECTED CEILING PLAN**

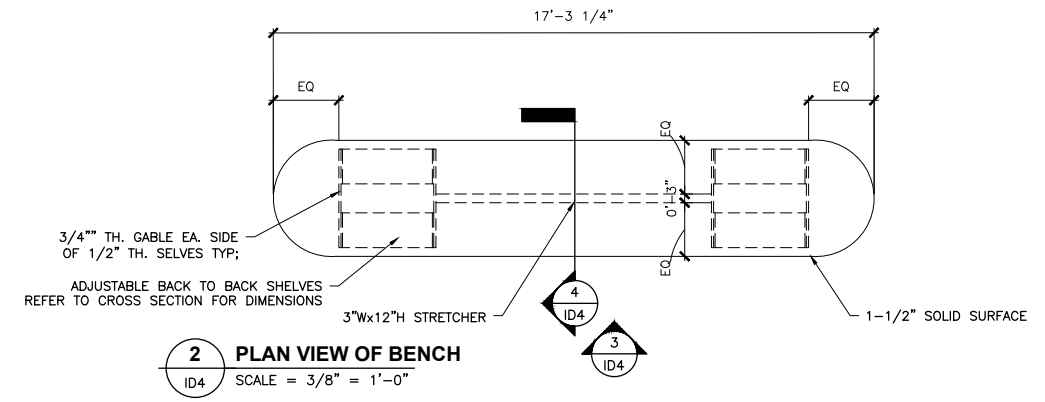
SCALE = 3/16" = 1'-0"



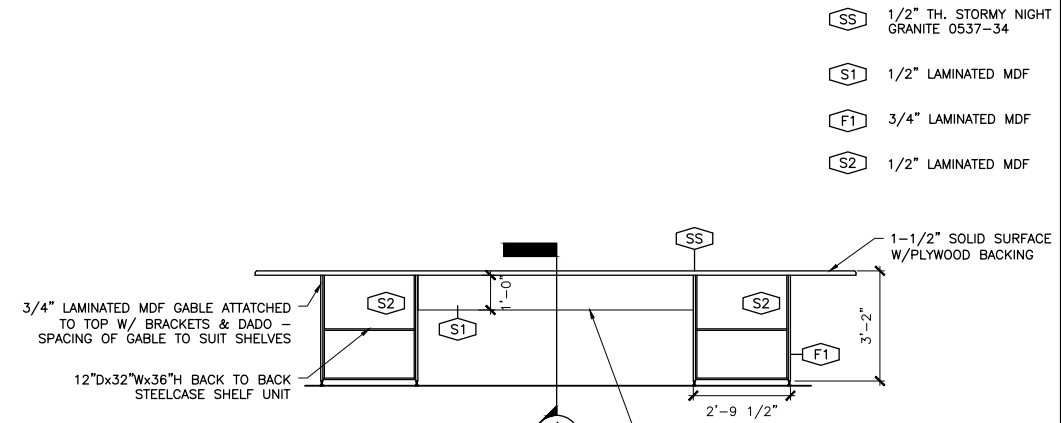
ID3



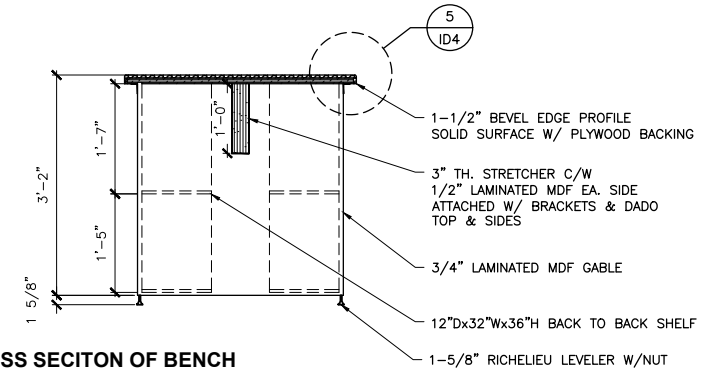
**1 FURNITURE PLAN**  
ID4 SCALE = 3/16" = 1' - 0"



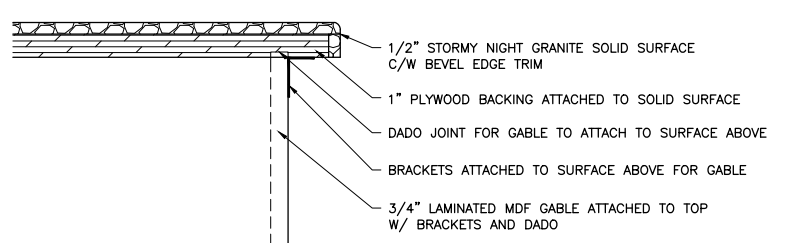
**2 PLAN VIEW OF BENCH**  
ID4 SCALE = 3/8" = 1'-0"



**3 ELEVATION OF BENCH**  
ID4 SCALE = 3/8" = 1'-0"



**4 CROSS SECTION OF BENCH**  
ID4 SCALE = 3/4" = 1'-0"



**5 EDGE DETAIL OF BENCH**  
ID4 SCALE = 3" = 1'-0"



SCHOOL OF APPLIED SCIENCE AND TECHNOLOGY  
ARCHITECTURAL TECHNOLOGY

CONSULTANTS

Table with 2 columns and 1 row, empty.

Table with 2 columns and 1 row, empty.

Table with 2 columns and 1 row, empty.

Table with 2 columns and 1 row, empty.

Table with 3 columns: No., DATE, DESCRIPTION. Empty.

PROJECT  
**LAW OFFICE RENOVATION**

DRAWING  
**MAIN FLOOR FURNITURE PLAN**

DESIGNED BY: NAIT  
CHECKED BY: LORI PAINE  
DRAWN BY: INDIGO LANDRY  
DATE: NOV. 2024  
COURSE: INDT 2301  
CLASS: A04  
INSTRUCTOR: LORI PAINE  
SCALE: VARIES  
SET: 4 of 4

PROJECT No: SHEET No:

2

CAD FILE: **ID4**